

# NavStations NX40/45



## A truly integrated navigation experience

### A complete navigation experience providing a greatly enhanced level of situational awareness

*The Simrad NX40 and NX45 NavStations are multifunctional navigation systems for sail and power boats. The NavStations can be standalone central systems or complete networks providing navigation information such as GPS chartplotter, radar, fishfinder and engine data on a single display.*

The ability to exchange information with external devices such as autopilots, AIS receivers, instruments, boat engines, video cameras and DVD player makes the NavStations extremely flexible.

Simrad NX40 and NX45 come with the following as standard:

- Built-in Chartplotter
- 32MB of chart data
- Built-in Fishfinder
- Radar and SimNet interface
- Video input

#### High quality displays:

The NX40 has a 8.4 inch display and the NX45 has a 12.1 inch display. The high resolution TFT color displays with powerful backlight and bonding technology eliminates any possibility of condensation on the inside of the display glass and highly increases the contrast and viewing angle of the display making them sunlight viewable.

#### High performance chartplotter:

The extremely fast chart redraw of the NX40 and NX45 makes it easy to plan sailing routes and view details at all chart scales. It also ensures a higher level of safety for dynamic and high speed cruising.

The chart data can be upgraded to full regional detail, including port and land information, by adding an optional C-MAP NT MAX SD cartridge for your area.

#### Built in echosounder:

The NavStations come with a built-in high performance echosounder which makes the system a very cost effective fishfinder – all you have to add is a transducer. The echosounder automatically adjusts its transmit power to the connected 1 kW or 600 W transducer optimizing bottom and fish detection performance.

Sail boaters who do not wish to utilize the built in echosounder for fishfinding can add Depth, Speed and Temperature functionality by adding the optional SimNet DTS800 or DT800 transducers.



#### System expansion with the SimNet network:

The SimNet interface provides easy system integration with other SimNet compatible products, such as Simrad autopilots, performance instruments, AIS receiver and VHF radio, giving you a truly integrated navigational experience.

Other non SimNet products can also be connected to the system using either NMEA0183 or NMEA2000®.

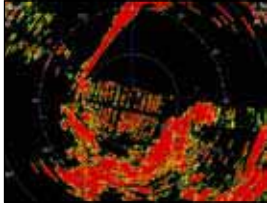
Full screen chart with data top line

Detailed presentation of the C-MAP NT MAX chart data in full screen view. Add radar overlay and AIS targets to get the full navigational overview. The data top line can be edited to fulfill any need or can be turned off to present full screen chart.



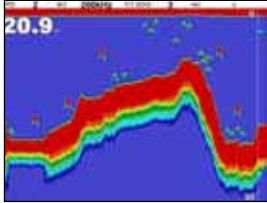
Full screen multicolor radar

The digital radar option adds advanced radar functions. Multicolor radar emphasizes the definition of targets.



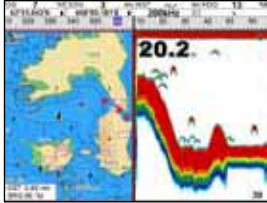
Full screen echosounder

Select detailed single frequency fishfinder presentation in one window, simultaneous dual frequency presentation in two windows or the advanced mixed frequency presentation, where the advantages of both frequencies are combined in one astonishingly detailed echogram window.



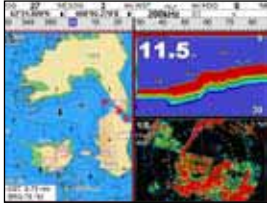
Dual window – chart and echosounder

Predefined combination pages are available as factory defaults, but it is very easy to customize those pages to contain precisely the information that is wanted.



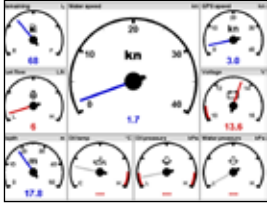
Triple window – Chart, Echo sounder and radar

Each page can be divided into 2, 3 or 4 windows with for example Chart, Echo, Radar, Video or analog gauges.



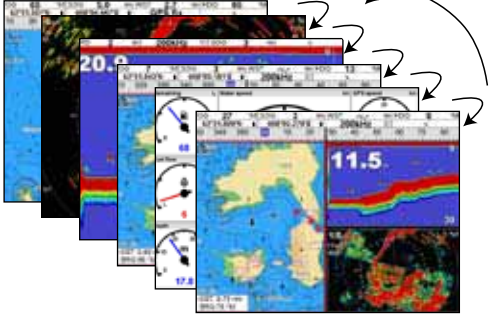
Full screen engine data

Analog presentation gives a fantastic fast overview of dynamic data. In this example engine data is presented, but also other dynamic data like depth, speed over ground, speed through water can be displayed simultaneously.



Favorite pages

Press the page key to easily toggle between favorite pages. Each favorite page can contain one or more windows and a data top line. (Max 6 favorite pages)



# NavStations NX40/45

## Available options with the NX40 and NX45:

*A large selection of extra equipment is available for the NX40 and NX45 NavStations, making it extremely easy to upgrade the system to include sophisticated functions.*

### Active GPS/WAAS antenna

The optional GS10 active SimNet antenna is recommended as the GPS data source for the system. It will provide an accurate GPS position with WAAS/EGNOS satellite differential corrections plus speed over ground, course over ground, GPS time and satellite information.

GS10 is powered via SimNet and it continues to provide GPS data, even when the NX40/45 NavStation is powered down. GPS data can thus be presented on instruments or autopilot displays connected to SimNet.

### Radar Upgrade:

The NX40/45 NavStations are easily upgraded to include radar functionality by adding a digital radar package of either 2 kW or 4 kW Radome or a 6 kW open scanner with a four-foot array.

### Video devices:

The built in PAL/NTSC video input allows you to connect video devices such as aft deck or engine room cameras, underwater cameras or DVD players. You can also install the Simrad high resolution IR (night vision) color camera in stainless steel.

### Fuel monitoring:

Optional fuel flow sensors are available for real-time presentation of fuel consumption and fuel management calculations.

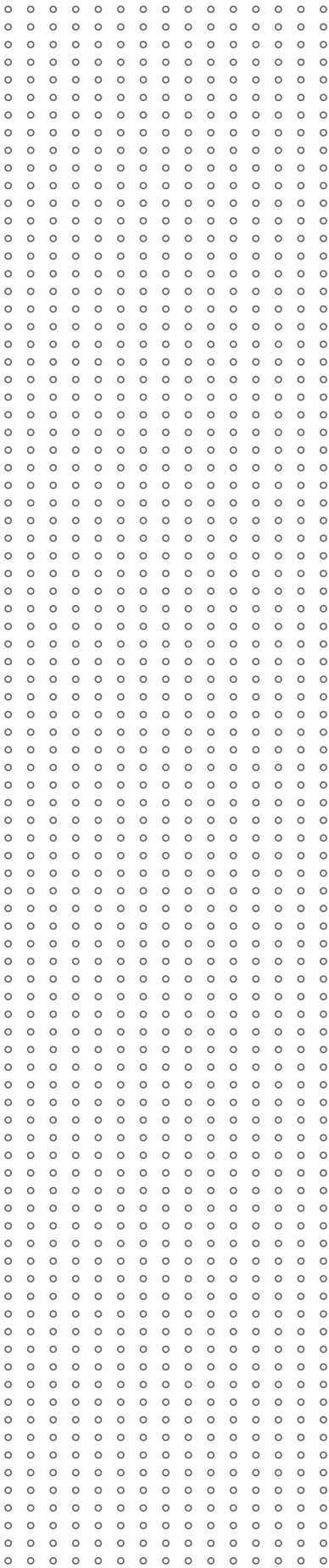
### Engine data:

For selected Mercury engines it is possible to obtain complete engine data for presentation on the NX40/45 products, all you need to do is to connect the optional SmartCraft™ gateway box between the engine and the NX40/45 NavStation.

### Automatic Identification System (AIS):

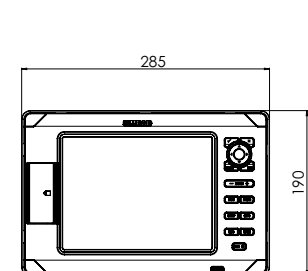
With Automatic Identification System (AIS) you enhance your security at sea. When adding an AIS receiver, you will see other ships on your chart or radar display and you can get the following information displayed for the vessels around you:

- Name and MMSI#
- Type of vessel (tanker, cargo, pleasure, sail etc)
- Closest point of approach (CPA)
- Time to closest point of approach (TCPA)
- Course, speed, heading and rate of turn

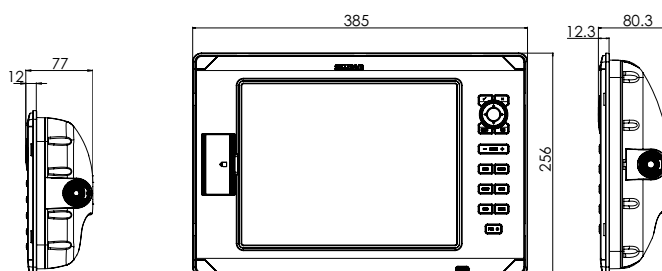


## NX40/45

	NX40	NX45
Total size (HxWxD)	190 x 285 x 75 mm 7.48"x11.22"x2.95	256 x 385 x 78 mm 10.08"x15.16"x3.07"
Display size (diagonal)	214mm (8.4")	307mm (12.1")
Display type and resolution	TFT color, 800x600 pixels	TFT color, 800x600 pixels
Backlight	Display and keys	
Supply voltage	10.5 to 32V DC	
Current consumption @13.8V	350mA without backlight, Max 1A with full backlight	
External alarm output	Switch to ground, max 30V DC, 200mA	
Operating temperature	0°C to 50°C (32°F to 122°F)	
Environment	IPx6 / IPx7/CFR46 (Chart holder and connectors in place)	
Chart slots:	2 SD slots	
Chart card	C-MAP™ SD Card (NT, NT+ or NT MAX)	
Build in Chart	32MB world map	
User Data Card	SD Card	
Waypoints	3000 with name max. 8 characters	
Routes	25 with up to 50 points each	
Tracks	Max: 1 x 2000 points & 4 x 500 points	
Chart scales	Chart: 0.05 to 4096 nm, Plotter mode down to 0.01nm	
Echo sounder power	Up to 600W / 1kW (Auto detects transducers max power)	
Echo sounder frequency	50kHz / 200kHz	
Sounder transducer	Optional – see Navico selection	
Echo sounder range	0.6 m (2ft ) to 1000 m (3300 ft)	
Temperature	0°C to 37.7°C (32°F to 99.9°F), resolution 0.1° (Optional transducer)	
Speed	Paddle wheel max. 50kn (Optional transducer)	
SimNet	Via supplied Active T-joiner	
NMEA2000®	Pending certification	
NMEA0183	<b>In:</b> BWR, DPT, GGA, GLL, GSA, GSV, HDG, HDM, HDT, MTW, MWV, RMC, VHW, VTG, DBT. <b>Out:</b> APA, APB, BWR, DBT, DPT, GGA, GLL, GSA, GSV, RMB, RMC, MTW, VHW, VLW, VTG, XTE	
Video input	BNC connector, 75 ohm, PAL and NTSC formats	
SmartCraft™	Single or Twin Gateway (Optional kit)	
Flow rate sensor:	Gasoline Min: 5 liters/hour and Max. 130 liters/hour (optional: Single or Twin sensor kit)	



NX40



NX45