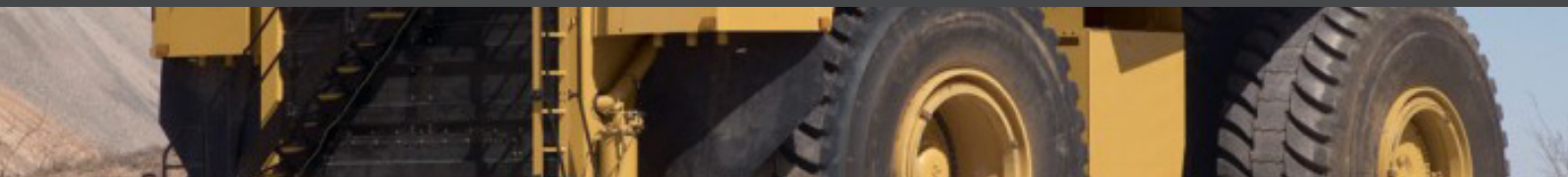


Viewtech **Narrow View** Rear View Camera



Built tough for industrial, agricultural and heavy transport applications.

Features

- IP69K water rating (can be pressure washed)
- Narrow 45° view
- 520TVL
- Sony Colour CCD
- IR illumination
- cast aluminium housing (powder coated)
- Built in demister/heater (automatic below 10°)
- built in audio microphone

IP69K Certified

IP69K Test Aparatus, 15L/min at 10000KPa around 360°



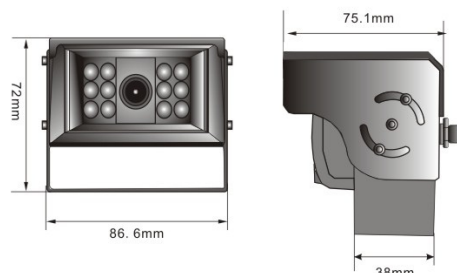
Why Narrow View?

Our narrow view camera allows more zoom but less horizontal detail.

This can be beneficial when used on truck decks, some agricultural implements or used as a rear view camera to watch the road behind rather than for reversing.

Specifications

Sensor	Sony 1/3" CCD
Resolution	520TVL
Lens	8mm, 45° view angle
Min illumination	0.0Lux with IR on
Water/Dust Rating	IP69K
IR	12 IR LEDs
Power	12V DC
Heater	Automatic
Audio	Yes
Dimensions	86 (W) x 72 (H) x 75 (D)



Waterproof Connections RCA adaptor available

